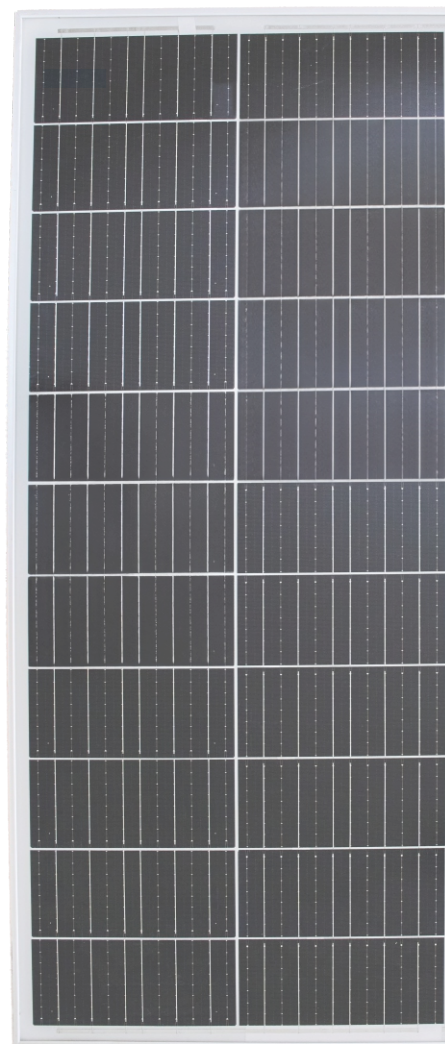


Main Characteristics

Applications	Street lighting, Urban furniture
Color	RAL 7035
Material	Powder coated 430 stainless steel
Dimensions	1030 x 680 x 327 mm 780 x 680 x 324 mm
Weight	27 Kg
Protection degree	IP 66 IK06
Exposed surface	top 0.70 m ² - front. 0.13 m ² - side 0.10 m ² top 0.53 m ² - front. 0.13 m ² - side 0.08 m ²
Insulation class	Selv (III)
Mounting	Bracket Ø 89 mm
N° LED	12 LED
LED Efficacy⁽¹⁾	187 lm/W - CRI ≥ 70 - @ 350 mA, T _j = 25 °C
Colour temperature	3000K - 730/669 4000K - 740/669 5700K - 757/669
Optics	IP type in PMMA - PC - SILICONE
Optical unit lifetime⁽²⁾	≥ 100.000hr
Rated voltage	12 Vdc
Battery Capacity	from 30 to 40Ah lithium
Autonomy	3 days fully charged Lithium Battery
Control system	Based on battery charge voltage or at predefined times with programmable steps.
Charge controller	MPPT (Maximum Power Point Tracking) technology with twilight function or programmable operating hours.
Dimming	Optional module for seasonal, weekly, and daily dimming.
Operating temperature	-20 / +50 °C
Efficiency(MPPT)	>94%
S/P (scotopic/photopic ratio)	≥1,4



* Values referred to the LED module and not the entire system



DESCRIZIONE

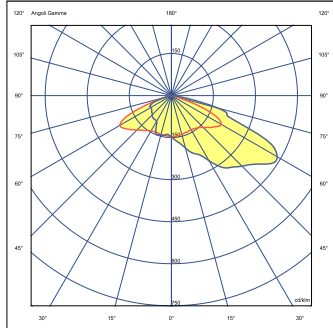
Solar-powered street luminaire made of stainless steel AISI 430, bent and powder-coated, with an integrated photovoltaic panel ranging from 90 to 120W in power. It includes a charge controller with twilight function or programmable operating hours, and a battery with a capacity ranging from 30 to 40Ah. The fixture has a 3-day autonomy calculated based on 8 hours of operation per day, with dimming function and activated battery charge control. PMMA/PC optics with IP66 and IK06 rating, guaranteed against UV rays and yellowing. Insulation class self. Component replacement can be done using common tools (only by authorized personnel). LED lifespan >100,000 hours L90B10. Color temperature ranging from 2200k to 5700k, CRI>70. Fixture efficiency up to 160lm/W.

Main Reference standards

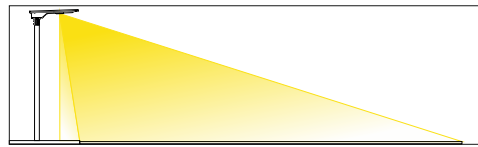
- EN 60598-1: Luminaires - Part 1: General requirements and tests
- EN 60598-2-3: Luminaires - Part 2-3: Particular requirements - Luminaires for road and street lighting
- IEC/TR 62778: Application of IEC 62471 for the assessment of blue light hazard to light sources and luminaires
- EN 55015: Limits and methods of measurement of radio disturbance characteristics of electrical lighting and similar equipment
- EN 61000-3-2: Electromagnetic compatibility (EMC) - Part 3-2: Limits - Limits for harmonic current emissions.
- EN 61000-3-3: Electromagnetic compatibility (EMC) - Part 3-3: Limits - Limitation of voltage changes, voltage fluctuations and flicker in public low-voltage supply systems
- EN 61547: Equipment for general lighting purposes - EMC immunity requirements
- EN 13032-1: Light and lighting - Measurement and presentation of photometric data of lamps and luminaires - Part 1: Measurement and file format Datasheet according IEC/PAS 62717 - IEC/PAS 62722

STREET LIGHTING

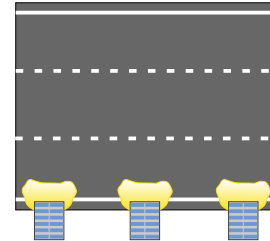
T4B



Inclinazione 2°



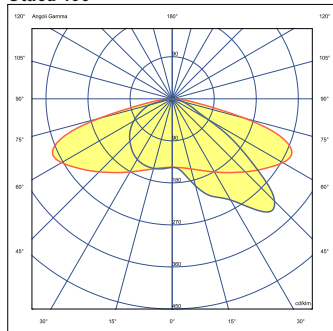
Symmetrical optics for wide roads and large areas



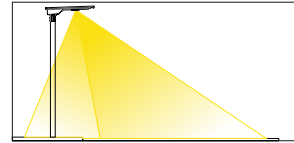
Recommended installation

Category	Road width	Luminaire Height	Spacing between luminaires
M4	da 2,00 a 11,00 ml	5,50 ml	fino a 15,00 ml

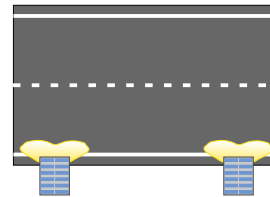
Ottica 406



Inclinazione 2°



Symmetrical optics for wide roads and large areas



Recommended installation

Category	Road width	Luminaire Height	Spacing between luminaires
M4	da 2,00 a 6,00 ml	5,50 ml	fino a 20,00 ml

4000K

Model	Led Current(mA)	Rated Luminaire Power(W)	Rated Led Flux (lm) ⁽¹⁾	Rated Luminaire Flux (lm) ⁽²⁾	Luminaire Efficacy [lm/W]
phWOW12	400	30,0	5230	4800	160,0

phWOW 12 / 40 / 500 / SCL

- Product Series
- Number of Leds
- Light temperature
- Current
- Optic

NOTA: Values indicated in this technical sheet are to be considered rated values. Flux tolerance +/- 10%. Power Tolerance: +/- 10%
 Rated led Flux according to LED GW P9LR35.PM(G5) IN M5 - A
⁽¹⁾ LED source efficiency according to LED datasheet.
⁽²⁾ Lifetime according to LM-80 DURIS S 8 - GW P9LR35.PM_4000K_600mA_6000h_180260W1.
⁽³⁾ Values measured in laboratory @ Ta = 25 °C.
⁽⁴⁾ LED source flux according to GW P9LR35.PM(G5) IN M5 - A.
 The characteristics of the product listed above are subjected to change without notice.

NOTE: Other optics available on request

PACKAGING



Dimensions: 720x1070x230 mm
Weight: max 29 Kg

Dimensions: 720x820x230 mm
Weight: max 27 Kg

DESIGN

